



**115 Maximus Road
North Hykeham**

£720 pcm

A well presented three bedroom house situated in the popular area of North Hykeham. The property benefits from a large kitchen diner, allocated parking for two vehicles to the front and a patio and garden with open countryside views to the rear. Recently refurbished throughout - this property must be viewed to appreciate



SERVICES

All mains services available. Gas central heating.
EPC RATING - B. Council Tax Band - B

ENTRANCE HALL

with stairs to first floor landing

LOUNGE

14'7 x 12'0 Window to front aspect, under stairs cupboard, radiator.

KITCHEN/DINER

15'3 x 11'9 Window to rear aspect, double doors to rear garden, units at ground and eye level, space for fridge freezer and washing machine, built in cooker and hob, built in dishwasher, radiator.

DOWNSTAIRS CLOAKROOM

W.C, Wash basin, radiator

MASTER BEDROOM

10'3 x 8'11 Window to front aspect, radiator door to en-suite shower room

EN-SUITE

8'0 x 5'3 W.C, Wash hand basin, shower, heated towel rail.

BEDROOM TWO

10'1 x 8'11 Window to rear aspect, views of open countryside, radiator.

BEDROOM THREE

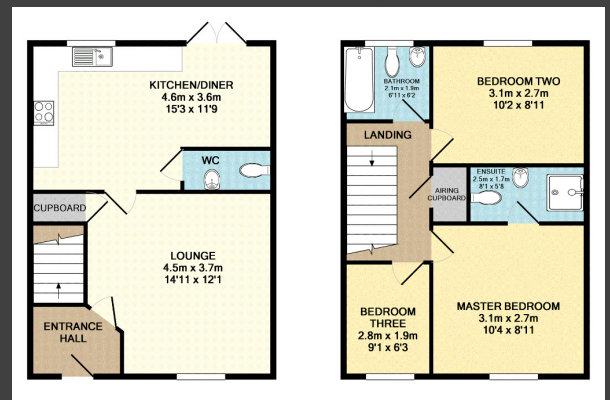
8'0 x 5'10 Window to front aspect, radiator

FAMILY BATHROOM

6'11 x 6'1 Window to rear aspect, bath with shower, W.C, Wash hand basin, heated towel rail

FURTHER INFORMATION

Pets at landlords discretion, please request in advance as may affect deposit requested. Rent payable by standing order on the first of each month.



Enquiries: (01529) 308313
www.laffordhomes.co.uk

Lafford Homes Limited is a registered company in England & Wales 10313301.
Registered office: Council Offices, Kesteven Street, Sleaford, NG34 7EF.
Lafford Homes Limited is a wholly owned Company of North Kesteven District Council.
Lafford Homes Limited is a member of the National Landlords Association -
Membership number: 167924

Agents Note: Whilst every care has been taken to prepare these sales particulars, they are for guidance purposes only. All measurements are approximate and for general guidance purposes only and whilst every care has been taken to ensure their accuracy, they should not be relied upon and potential buyers are advised to recheck the measurements.

